

## **Please join us!**

### **Monthly Meetings**

The Society meets on the 2<sup>nd</sup> Sunday of every month at Bethlehem Lutheran Church at 52<sup>nd</sup> and Central Avenue in Indianapolis, except May. May's meeting is on the 3<sup>rd</sup> Sunday to avoid meeting on Mother's Day.

Everyone is welcome! We encourage listeners, and attendance is always free. Just bring your voice, your instrument and your love of good music.

If you wish to join the Society, annual dues are \$25 per household.

~~~~~

### **Our Meeting Schedule**

- **1-2 pm Slow Jam** for novices
- **2-3pm Performance Hour**  
"Open Mic" Sign up at 1:45 pm to perform a song or sit back and enjoy the music. Each month there is a suggested theme.
- **3-4 pm Big Band Practice** Play and sing songs from our songbook with the group.
- **4-5 pm Sharing Circle** Feel free to share a song in a very informal setting among friends.

## **About The Society**

The Indiana Folk Music Society was founded in 1971 by folk music lovers with an interest in acoustic instruments. Now over 50 years old, the Society has members of all ages and levels of musical ability. We are a group of people passionate about sharing our love of folk and traditional music.

In addition to monthly meetings, the Society sponsors the Annual Eagle Creek Folk Festival in September. The festival is free to attend and is an opportunity for the members to showcase their talents. Nationally known musicians are also invited to perform.

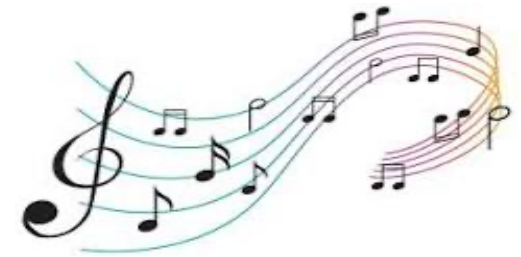
The Society performs concerts throughout Indiana at a variety of events and venues such as the Indiana State Fair, festivals, nursing homes and libraries. Our performances can be customized for each event and the audience is always invited to sing along and visit with us afterwards.

To arrange a performance, contact the Society's Music Coordinator either through our website: [www.indianafolkmusic.org](http://www.indianafolkmusic.org) or by mail -

Indiana Folk Music Society  
Music Coordinator  
P.O. Box 1503  
Indianapolis, IN 46206-1503



## **INDIANA FOLK MUSIC SOCIETY**



**Website:** [www.indianafolkmusic.org](http://www.indianafolkmusic.org)

**Email:** [indianafolksociety@gmail.com](mailto:indianafolksociety@gmail.com)

**Mail:** PO Box 1503

**Indianapolis, IN 46206-1503**

**Like us on Facebook!**

**Mission Statement:** We are a not-for-profit corporation organized under the laws of the state of Indiana for the charitable and educational purposes of promoting, perpetuating, and supporting traditional American Music.

Join us as we gather monthly to share our love of folk and traditional music. We play acoustic instruments including mountain and hammered dulcimer, guitar, banjo, mandolin, fiddle, bass, harmonica, ukulele, autoharp and rhythm instruments. If you'd like to play and sing, or just listen, we are a welcoming group.

In addition to providing opportunities for playing, singing and listening to folk music, the Society supports new players by dedicating the first hour of each meeting to learning our repertoire through a Slow Jam which is led by some of our members. We welcome players of all skill levels to play along and encourage participation in the Big Band and as we seek to promote folk and traditional American music in the community. Our experienced players are willing, ready and able to share their musical knowledge and expertise to help fellow musicians. Whether performing in front of a large group during the Performance Hour or in a small intimate sharing circle, the audience is always friendly and encouraging as we all seek to become better musicians. We were all beginners once!

Everyone is welcome! We provide a safe environment for players of all ability levels. Come for fellowship, share songs & stories, have fun and make new friends.

**We look forward to meeting you!**

